



LEDWYCHE RISE

A collection of houses and bungalows on
the edge of the historic town of Ludlow



THE SHEET, LUDLOW

The Sheet is a popular village located just one mile from Ludlow's bustling and vibrant town centre, enjoying a scenic position in the famously picturesque surrounding countryside.

Ludlow itself is well known for regular events, markets and festivals celebrated throughout the year, as well as its well-reputed restaurants and eateries. Local beauty spots include the River Teme that runs through the town and the Shropshire Hills Area of Outstanding Natural Beauty.

Nearby Bishop Hooper C of E and St Laurence C of E Primary Schools are both rated Good by OFSTED, as is Ludlow C of E Senior School. Ludlow College offers a wide syllabus for school leavers, and there are also a number of well-regarded nurseries and pre-schools in the area.

Hereford is around thirty minutes away from Ludlow whilst Shrewsbury is less than an hour, both easily accessible on the A49. Ludlow also has a train station for convenient business and leisure travel by rail.



THE HOMES

An appealing collection of two, three and four-bedroom homes to suit a wide range of lifestyles, from first-time buyers to families and down-sizers. Each home has a garden and driveway parking including an electric vehicle charging point, many also have garages.



INCLUDED IN EACH HOME...

- NHBC 10-year Buildmark warranty
- Gas central heating
- UPVC windows
- Ground floor cloakroom
- Choice of kitchen units with quartz or laminate worktops*^
- Oven, hob, integrated dishwasher and fridge freezer^
- Contemporary white bathrooms
- Choice of wall and floor tiles*^
- Sliding door wardrobes^
- Security alarm^
- Electric car charging point
- Turf laid to front garden
- Fibre ready (FTTP)

* At relevant stage

^ As specified for individual house types - ask Sales Advisor for full details.

TENURE - All homes are freehold. A service charge will be levied to cover maintenance of communal areas.



LEDWYCHE RISE

North



Key

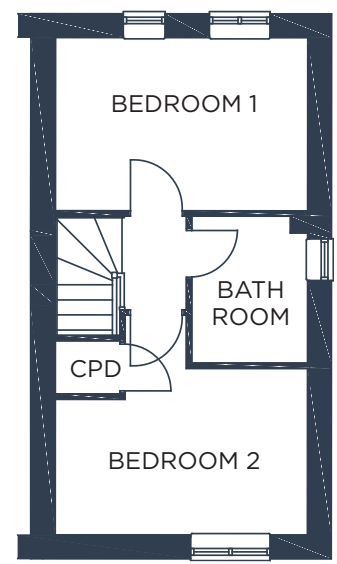
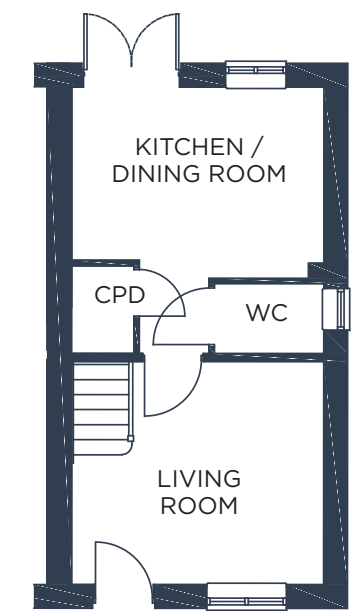
- Belgrave
- Berwick
- Arundel
- Ludlow
- Earlsdale
- Carisbrooke
- Grasmere
- Rydal
- Whittington
- Hopton
- Affordable

TO LUDLOW AND A49





BELGRAVE



GROUND FLOOR

Living Room
12'6 x 11' - 3800 x 3355

Kitchen/Dining Room
12'6 x 9'5 - 3800 x 2880

FIRST FLOOR

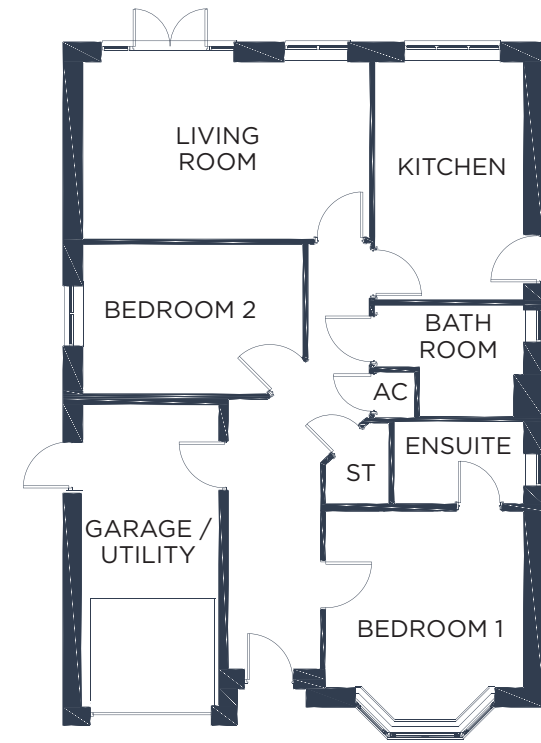
Bedroom 1
12'6 x 8'7 - 3800 x 2626

Bedroom 2
12'6 x 8'3 - 3800 x 2505

The Belgrave is an appealing two bedroom semi-detached home with patio doors leading from the modern kitchen/dining room into the rear garden.

This pretty home includes a downstairs WC and a spacious master bedroom.

WHITTINGTON



GROUND FLOOR

Living Room
17'7 x 10'10 - 5350 x 3295

Kitchen
14'5 x 9' - 4390 x 2750

GROUND FLOOR

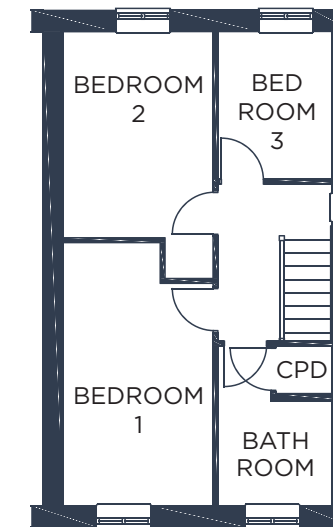
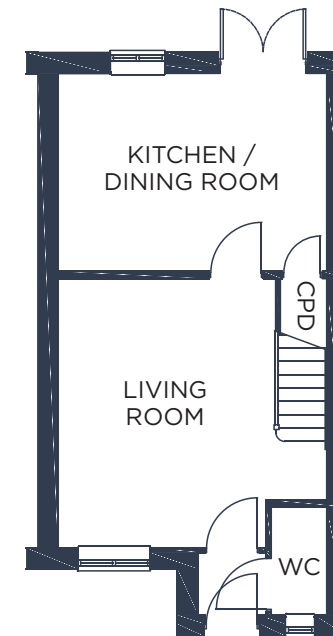
Bedroom 1
12'1 x 10'11 - 3680 x 3315

Bedroom 2
13'3 x 9'2 - 4045 x 2780

The Whittington is a spacious and low maintenance two-bedroom bungalow with garage and utility area. The living room has double doors leading out into the garden.

Bedroom one benefits from an en-suite shower room.

BERWICK



GROUND FLOOR

Living Room
15'4 x 14'10 - 4680 x 4518

Kitchen/Dining Room
15'4 x 10'11 - 4680 x 3315

FIRST FLOOR

Bedroom 1
14'6 x 8'6 - 4415 x 2578

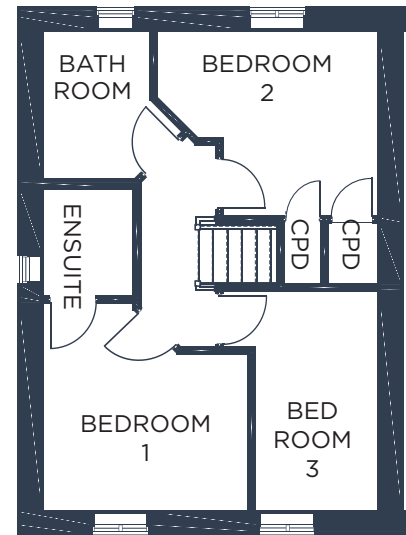
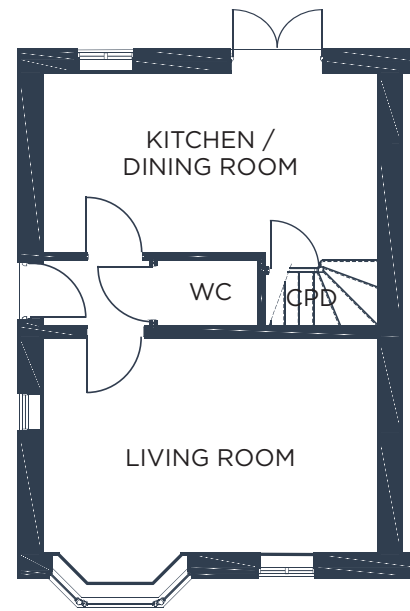
Bedroom 2
11'4 x 8'6 - 3458 x 2577

Bedroom 3
8'2 x 6'8 - 2475 x 2023

Attractive semi-detached and end-terraced homes, offering a large kitchen/dining room with patio doors leading to garden.

Three good-sized bedrooms offer practicality and versatility to the upstairs space.

ARUNDEL



GROUND FLOOR

Living Room
17'3 x 11 - 5245 x 3360

Kitchen/Dining Room
17'3 x 9'3 - 5240 x 2815

FIRST FLOOR

Bedroom 1
10'9 x 10'7 - 3270 x 3235

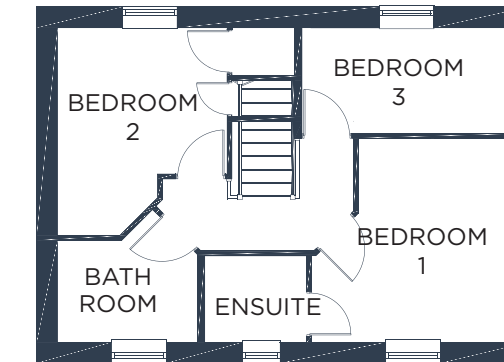
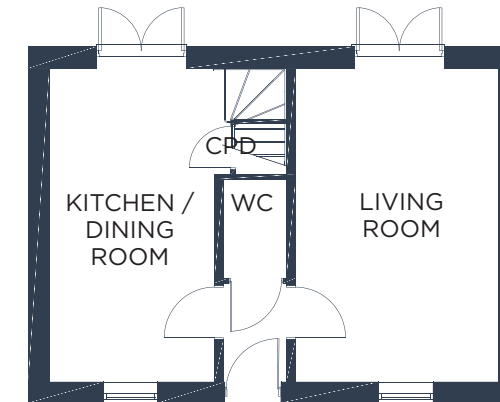
Bedroom 2
11'4 x 9'8 - 3465 x 2945

Bedroom 3
11'4 x 6'4 - 3430 x 1925

The Arundel is a three-bedroom semi-detached home including a large living room with a pretty bay window. The kitchen/dining room has double doors leading to the rear garden.

The spacious master bedroom benefits from an en-suite shower room.

LUDLOW



GROUND FLOOR

Living Room
17'3 x 11' - 5250 x 3360

Kitchen/Dining Room
17'3 x 10'1 - 5250 x 3065

FIRST FLOOR

Bedroom 1
10'9 x 10'7 - 3270 x 3240

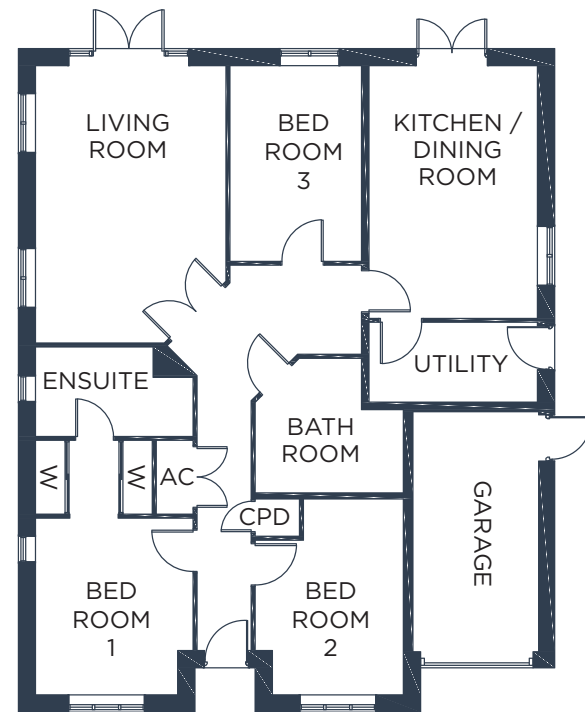
Bedroom 2
11'5 x 9'8 - 3470 x 2945

Bedroom 3
11'3 x 6'4 - 3430 x 1930

The Ludlow is a three-bedroom detached house with spacious, open plan kitchen/dining room and patio doors to the garden.

Upstairs there are three good-sized bedrooms with en-suite to the master bedroom.

HOPTON



GROUND FLOOR

Living Room
18'6 x 12'9 - 5635 x 3875

Kitchen/Dining Room
16'9 x 11'3 - 5100 x 3425

GROUND FLOOR

Bedroom 1
11'10 x 10'6 - 3595 x 3205

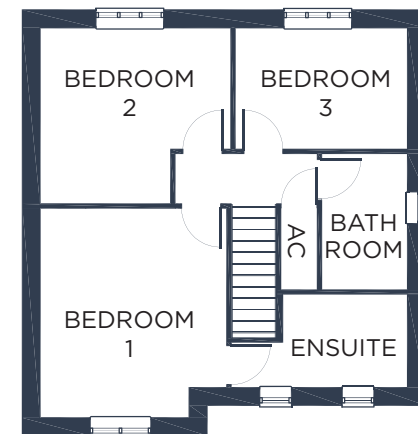
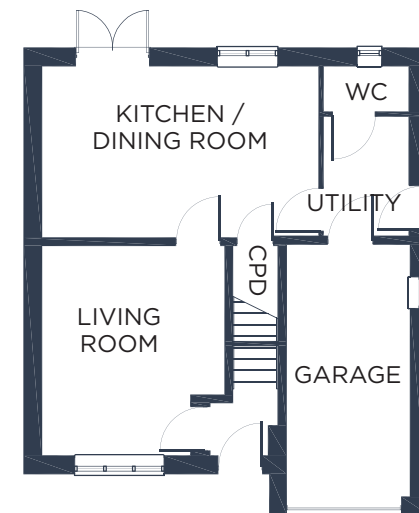
Bedroom 2
13'1 x 9'11 - 3980 x 3015

Bedroom 3
12'11 x 8'9 - 3940 x 2675

The Hopton bungalow is an impressive, low-maintenance home designed for ease of living. The living room and kitchen/diner have patio doors leading to the garden, whilst the separate utility space and large bathroom are practical additions.

There are three good-sized bedrooms, with en-suite and wardrobes to bedroom one.

EARLSDALE



GROUND FLOOR

Living Room
13'8 x 11'11 - 4165 x 3640

Kitchen/Dining Room
18'1 x 11'3 - 5500 x 3415

FIRST FLOOR

Bedroom 1
13'6 x 12'2 - 4115 x 3705

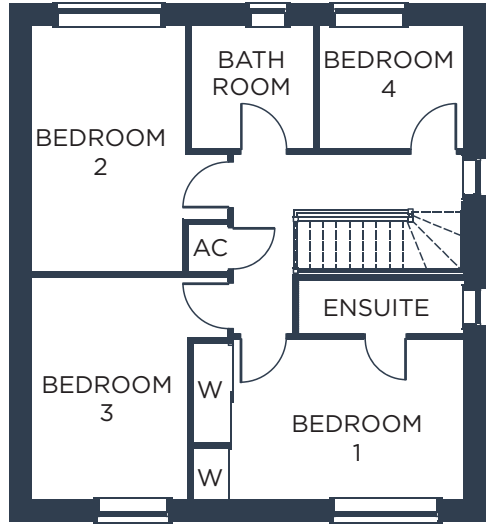
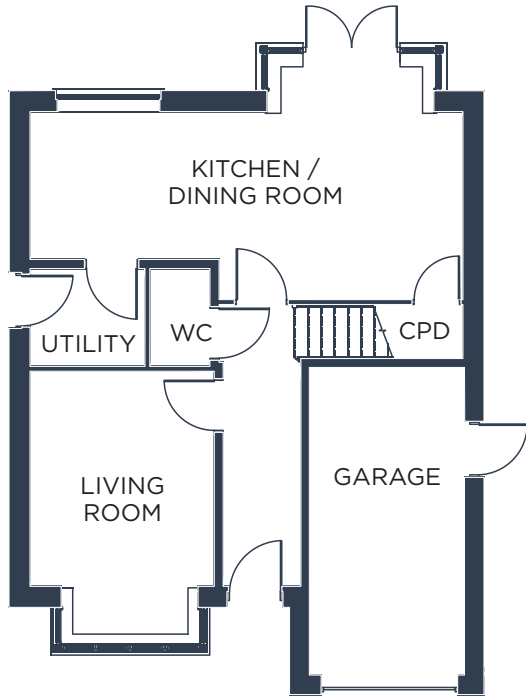
Bedroom 2
12'5 x 11'7 - 3790 x 3535

Bedroom 3
11'2 x 8'1 - 3410 x 2445

The Earlsdale is a spacious detached home including a large kitchen/dining room with patio doors to the garden. There is a generously-sized integral garage and separate utility space.

The Earlsdale has three well - proportioned bedrooms and the master has a luxurious en-suite.

CARISBROOKE



GROUND FLOOR

Living Room
11'10 x 9'11 - 3605 x 3015

Kitchen/Dining Room
23'11 x 10'5 - 7275 x 3150

FIRST FLOOR

Bedroom 1
12'9 x 9'1 - 3890 x 2760

Bedroom 2
13'3 x 8'6 - 4035 x 2595

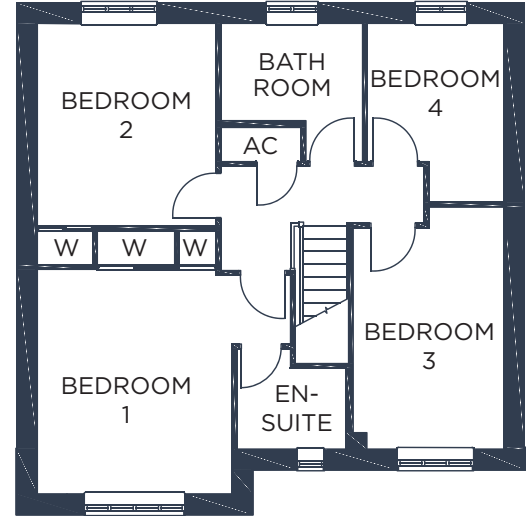
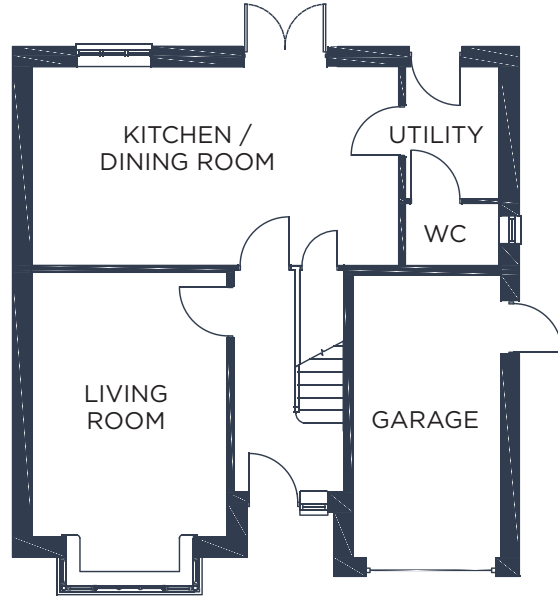
Bedroom 3
12'7 x 8'7 - 3840 x 2625

Bedroom 4
7'11 x 6'10 - 2415 x 2075

The Carisbrooke is a spacious four - bedroom home, complete with through kitchen/dining area with attractive bay and double doors leading to the garden.

The master bedroom has an en-suite shower room and fitted wardrobes.

GRASMERE



GROUND FLOOR

Living Room
15'2 x 11' - 4610 x 3340

Kitchen/Dining Room
21'6 x 11'7 - 6560 x 3530

FIRST FLOOR

Bedroom 1
12'11 x 10'1 - 3940 x 3065

Bedroom 2
11'9 x 10'1 - 3590 x 3065

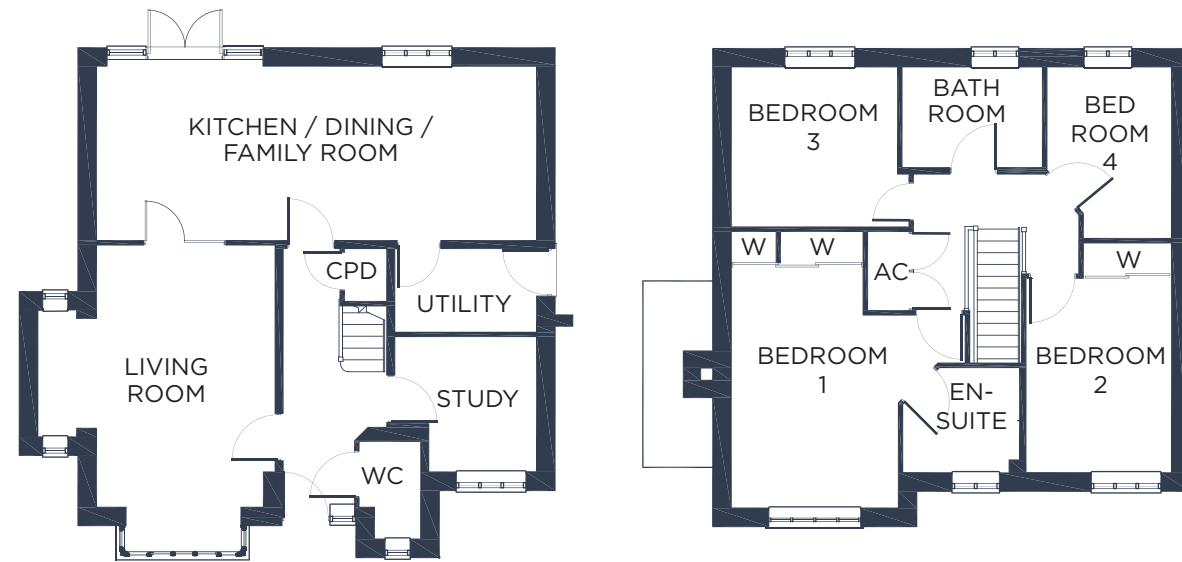
Bedroom 3
14' x 9' - 4250 x 2735

Bedroom 4
10'9 x 8'5 - 3280 x 2575

A well-proportioned four-bedroom home, the Grasmere benefits from a spacious living room with an attractive bay window.

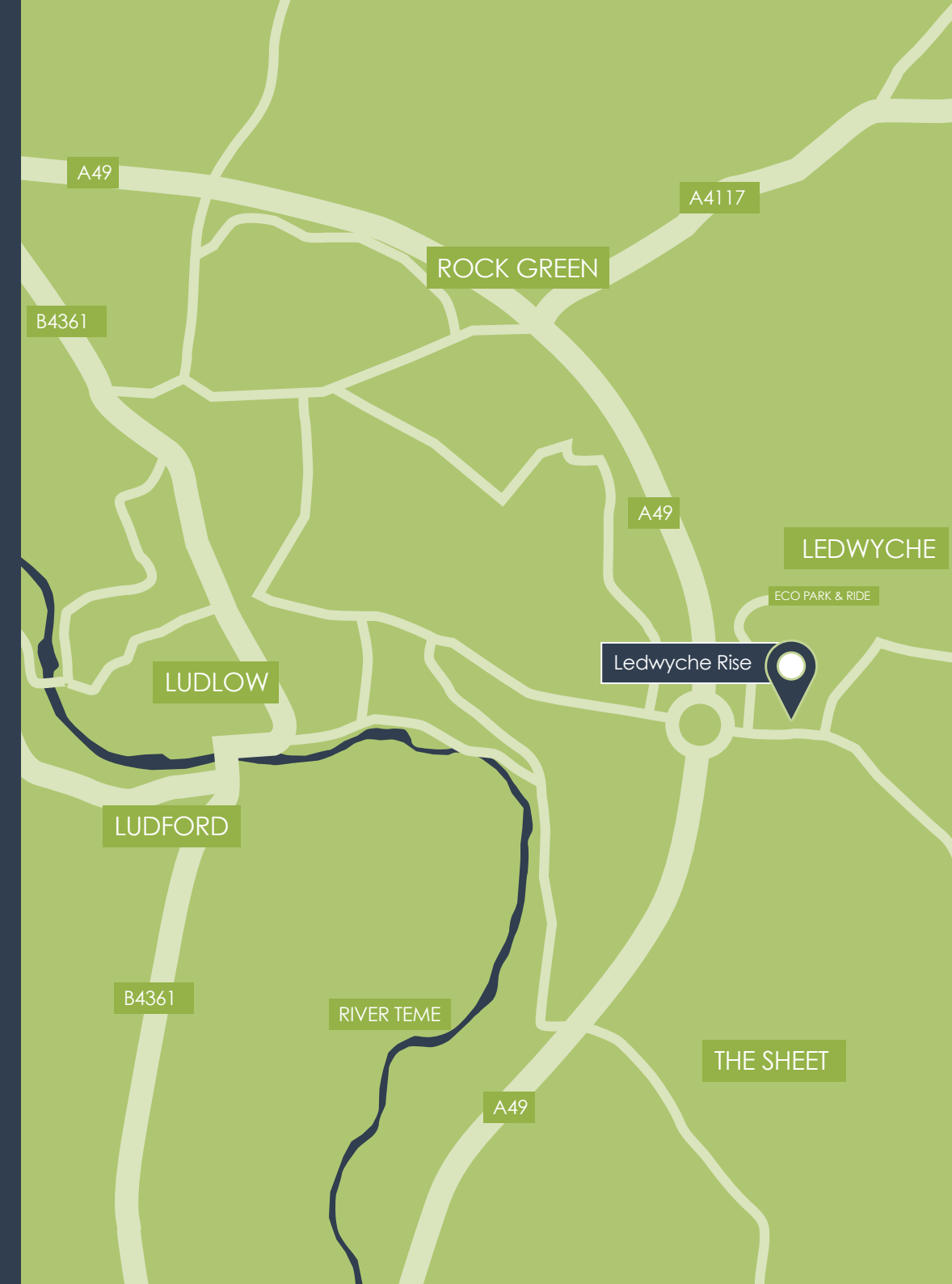
There is a large master bedroom with superb en-suite shower room. There are fitted wardrobes to bedrooms one and two.

RYDAL



The Rydal is a desirable home for a growing family, this distinctly attractive four-bedroom house offers spacious, adaptable accommodation. The large kitchen/dining room features double doors to the rear garden and the large living room includes an inglenook fireplace.

All homes include a separate garage,



WHO TO CONTACT

For all enquiries: 01743 761789
 Website: www.shropshire-homes.com
 Email: sales@shropshire-homes.com
 Follow us:



WHERE TO GO

Ledwyche Rise
 Sheet Road
 Ludlow
SY8 4NB

SALES AND MARKETING SUITE OPENING TIMES

Thursday – Monday 10am-5pm
 (Closed Tuesdays & Wednesdays)

GROUND FLOOR

Living Room
16'7 x 11'4 - 5050 x 3455

Kitchen/Dining Room
27'11 x 11'1 - 8515 x 3385

Study
8'10 x 8'7 - 2700 x 2615

FIRST FLOOR

Bedroom 1
17'5 x 10'7 - 5305 x 3230

Bedroom 2
11'10 x 9'1 - 3600 x 2770

Bedroom 3
10'6 x 10'3 - 3195 x 3130

Bedroom 4
11'5 x 7'10 - 3480 x 2395



THE DEVELOPER

Shropshire Homes is an award-winning house-builder, which has 40 years of experience developing homes of quality and character in the most desirable locations in and around Shropshire.



HELP TO BUY*

This government backed scheme enables many first-time buyers to benefit from a 20% shared equity loan and purchase a new home with a 5% deposit. Please ask a Sales Advisor to find out about eligibility and qualifying properties.

*subject to status, terms and conditions.

SHROPSHIRE HOMES LTD, THE OLD WORKHOUSE, CROSS HOUSES, SHREWSBURY, SHROPSHIRE SY5 6JH

SHROPSHIRE HOMES LTD BELIEVES THAT THESE DETAILS ARE CORRECT AT THE TIME OF PRINTING. HOWEVER, THEY DO NOT FORM PART OF AN OFFER OR CONTRACT AND MAY BE AMENDED ACCORDING TO PREVAILING CIRCUMSTANCES. ILLUSTRATIONS OF HOUSE TYPES ARE ARTISTS IMPRESSIONS AND DO NOT REPRESENT FINAL DETAIL.

PLEASE NOTE DIMENSIONS ARE USUALLY APPROXIMATE MAXIMUM MEASUREMENTS.
THE SPECIFICATION OF EACH HOUSE TYPE WILL VARY. PLEASE ASK OUR SALES ADVISORS FOR FULL DETAILS ON SPECIFIC PLOTS.

INTERNAL IMAGES MAY NOT BE OF ACTUAL PLOT/HOUSE TYPE OR SPECIFICATION –
ASK FOR FULL DETAILS.

TYPICAL IMAGES: ELEVATIONS MAY VARY

PRINTED BY BATTLEFIELD PRINTING GROUP LTD
DESIGNED IN-HOUSE

