



LEIGHTON PARK

APARTMENT | TOWN HOUSE | PENTHOUSE

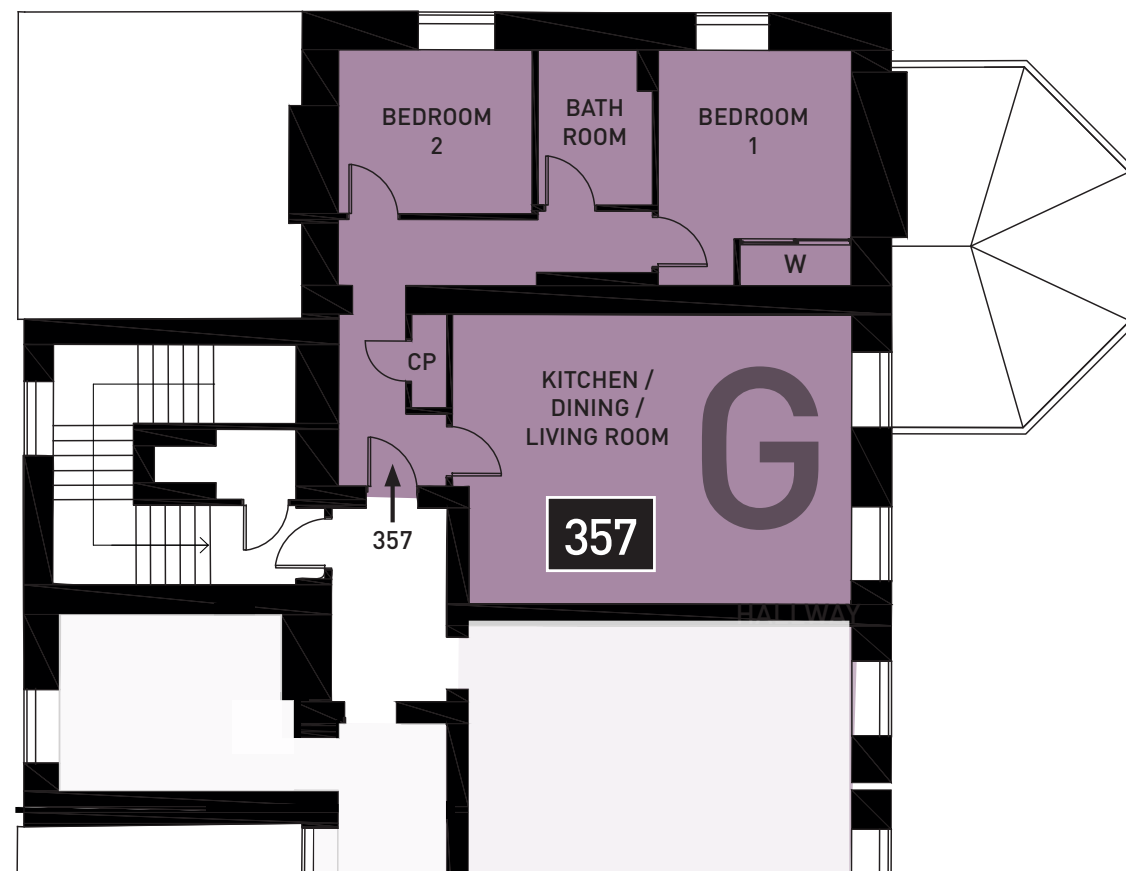


THE HERITAGE BUILDINGS

THE APARTMENT

Property 357
Two-bedroom apartment
FIRST FLOOR

£244,950



FIRST FLOOR APARTMENT

Kitchen/Living/Dining 6822 (22'5) 4946 (16'3)

Bedroom 1 4021 (13'2) 3299 (10'10)

Bedroom 2 3310 (10'10) 2800 (9'2)

*ALL ROOM MEASUREMENTS ARE APPROXIMATE

A contemporary two-bedroom apartment sympathetically converted from part of a magnificent Victorian building and set amongst beautiful, mature parkland. Includes parking.

The apartment is finished to a high quality specification including integrated fridge/freezer, washer/dryer oven and microwave with grill.

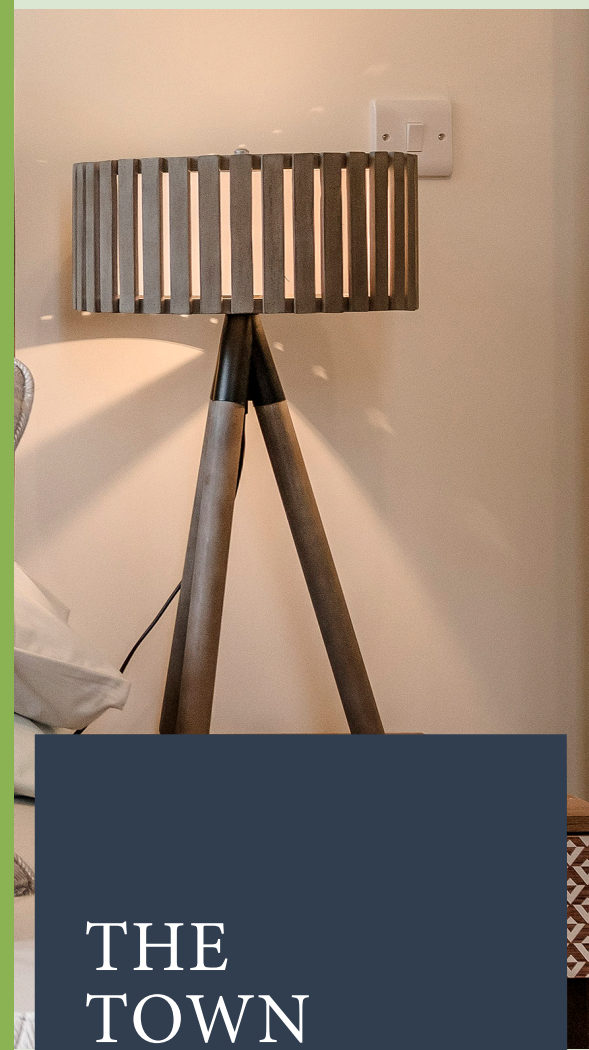
For more information on appliances and fittings, please request a specification sheet.







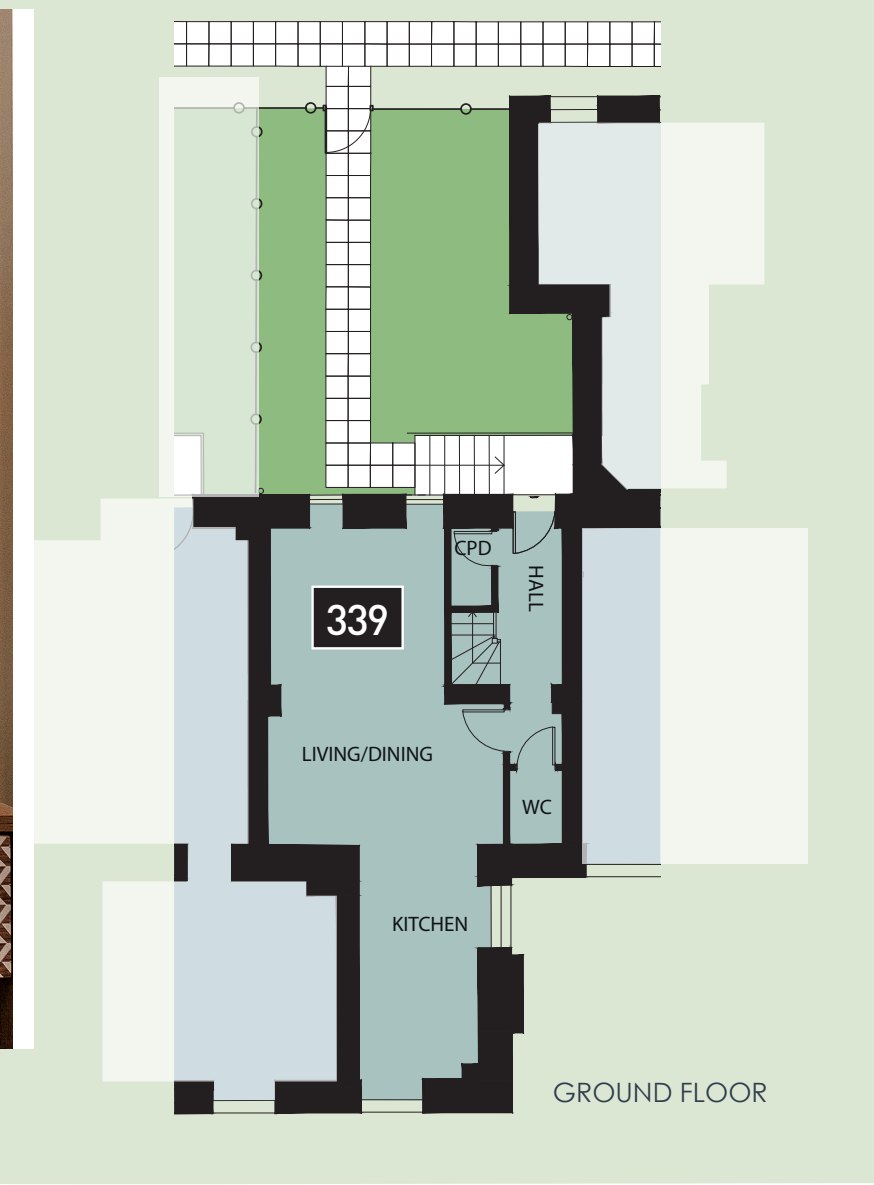
*SHOW HOME IMAGES



THE
TOWN
HOUSE

Property 339
Two-bedroom house

£294,950



TWO-STOREY HOUSE

Lounge/Dining/Kitchen 11176 (36'8) 4785 (15'9)

Bedroom 1 3569 (11'9) 3197 (10'6)

Bedroom 2 7604 (25') 2456 (8'1)

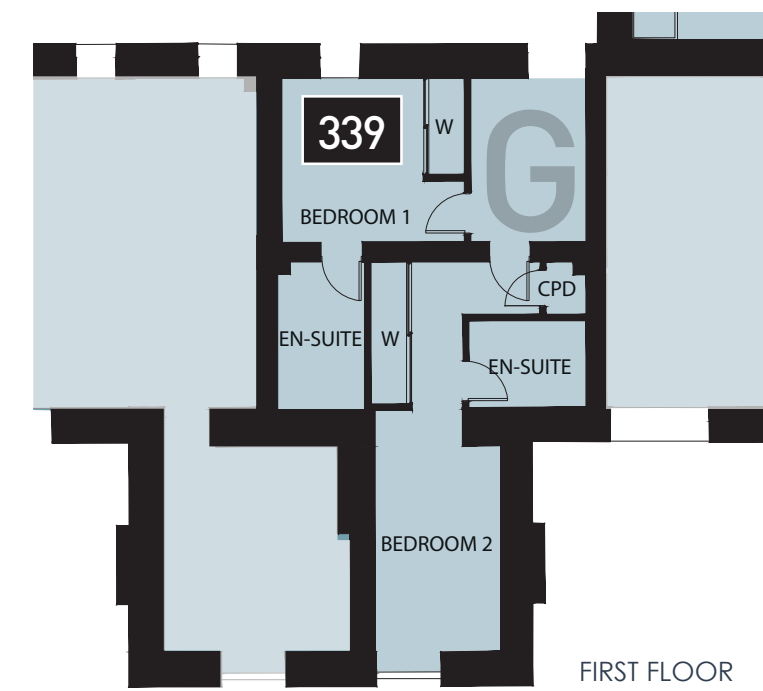
*ALL ROOM MEASUREMENTS ARE APPROXIMATE

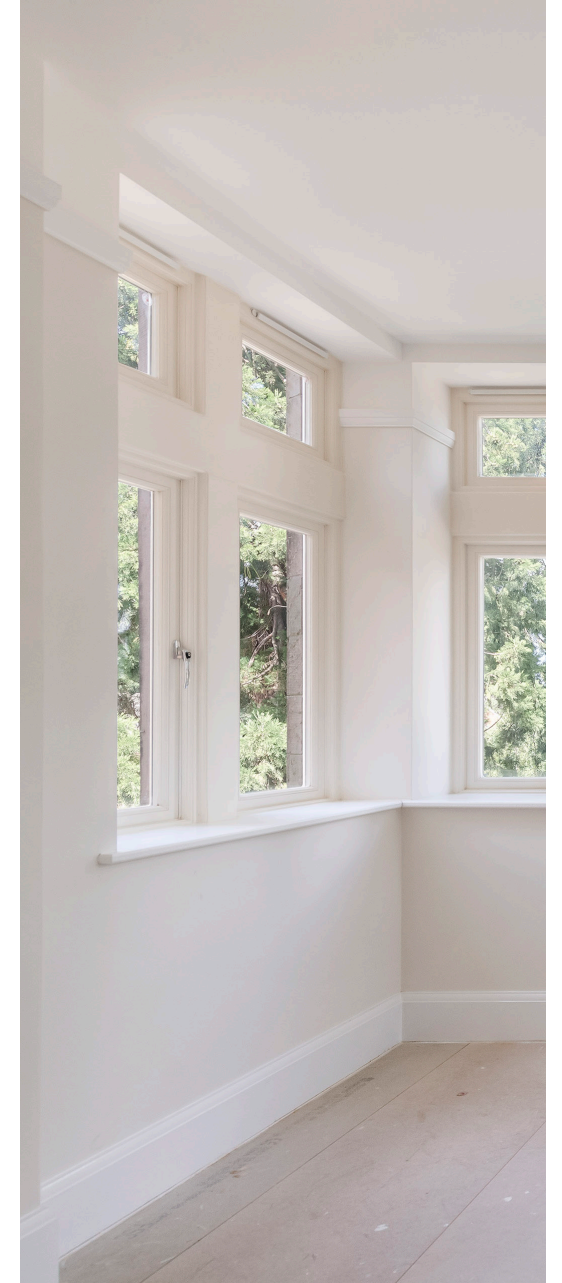
Luxury two-bedroom converted town house in The Heritage Buildings at Leighton Park. Just a few minutes from Shrewsbury town centre. Includes allocated parking.

The town house benefits from a charming front garden with an entrance to the hallway. The spacious kitchen/living/dining area has several views around the beautiful Leighton Park grounds.

The town house is finished to a high quality specification including integrated fridge/freezer, washer/dryer oven and microwave with grill.

For more information on appliances and fittings, please request a specification sheet.





TWO-BEDROOM PENTHOUSE

Kitchen/Dining 6851 (22'6) 3945 (12'11)

Lounge 5304 (17'5) 4422 (14'6)

Bedroom 1 4667 (15'4) 3909 (12'10)

Bedroom 2 3724 (12'3) 3602 (11'10)

*ALL ROOM MEASUREMENTS ARE APPROXIMATE

The Penthouse; a bright and spacious first floor apartment with a private entrance, large kitchen and bright and airy lounge overlooking the magnificent Leighton Park grounds. There are two spacious bedrooms, with en-suite and fitted wardrobes to the master bedroom.

The Penthouse is finished to the highest specification including integrated fridge/freezer, oven, microwave, warming drawer as well as integrated dishwasher and washer/dryer.

For more information on appliances and fittings, please request a specification sheet.

THE PENTHOUSE

Property 347
Two-bedroom apartment
First Floor

£374,950

THE PENTHOUSE, GALLERY

FLOORING INCLUDED THROUGHOUT



LEIGHTON PARK

Located in Bicton Heath and nearing completion, around 150 homes are now occupied following five years of careful redevelopment. An award-winning housebuilder, Shropshire Homes have been meticulous in preserving the Victorian grandeur of the former hospital building as well as the surrounding parkland to create an iconic residential development befitting of the town's architectural heritage.



DEVELOPMENT DETAILS

The Heritage Buildings form the centre of the Leighton Park development at the edge of the historical town of Shrewsbury.

LOCATION

Shrewsbury is a popular and desirable West Midlands market town with a host of independent shops and eateries, as well as a train station providing links further afield.

VIEWING BY APPOINTMENT ONLY

Leighton Park
Bicton Heath
Shrewsbury
SY3 5AG

01743 368766
www.shropshire-homes.com

**CONSUMER
CODE FOR
HOME BUILDERS**

www.consumercode.co.uk

NHBC

