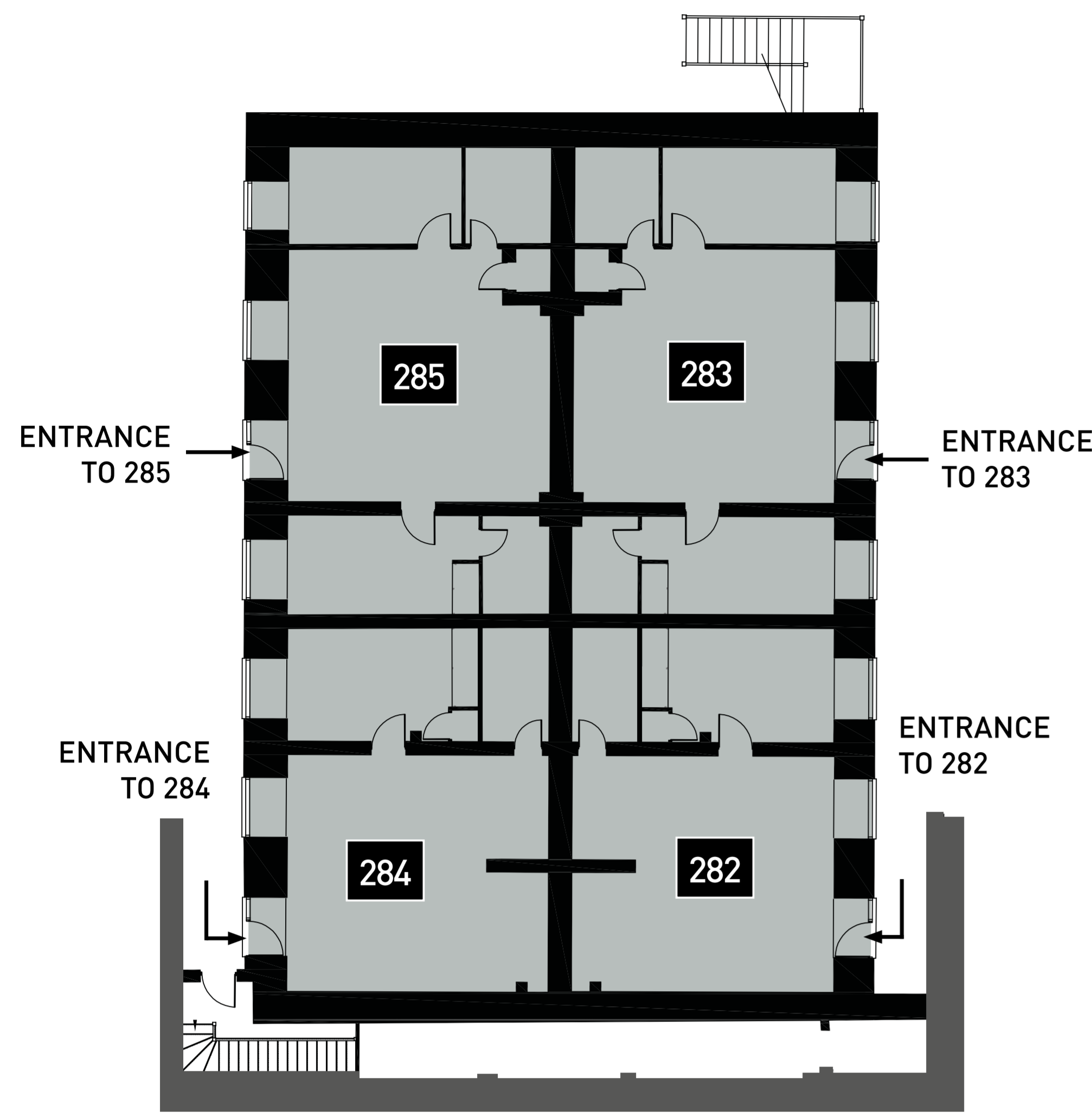
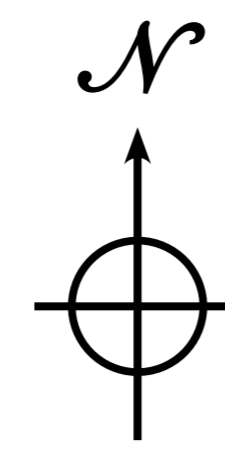
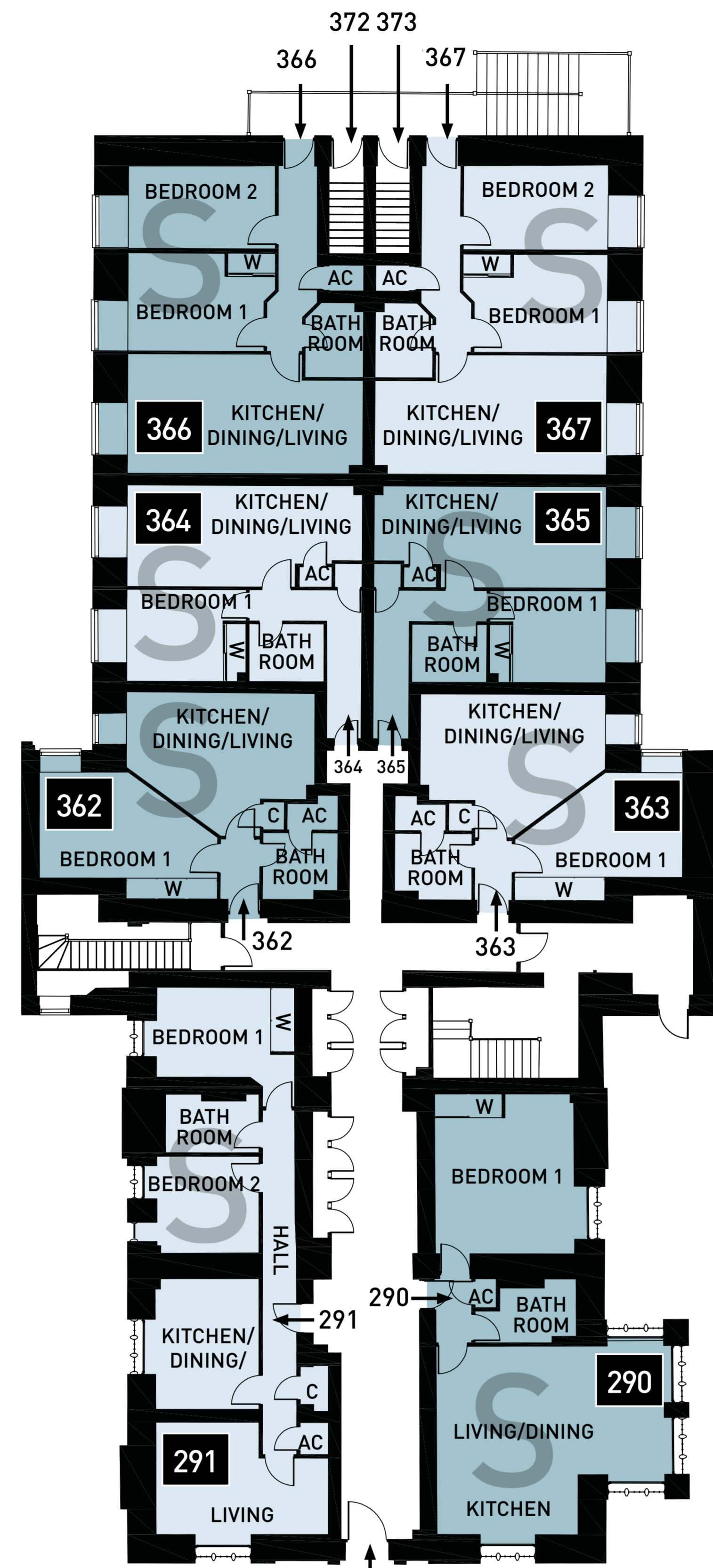


Central Hall

A range of 1, 2 & 3 bedroom homes, apartments and two storey houses.



Lower ground floor

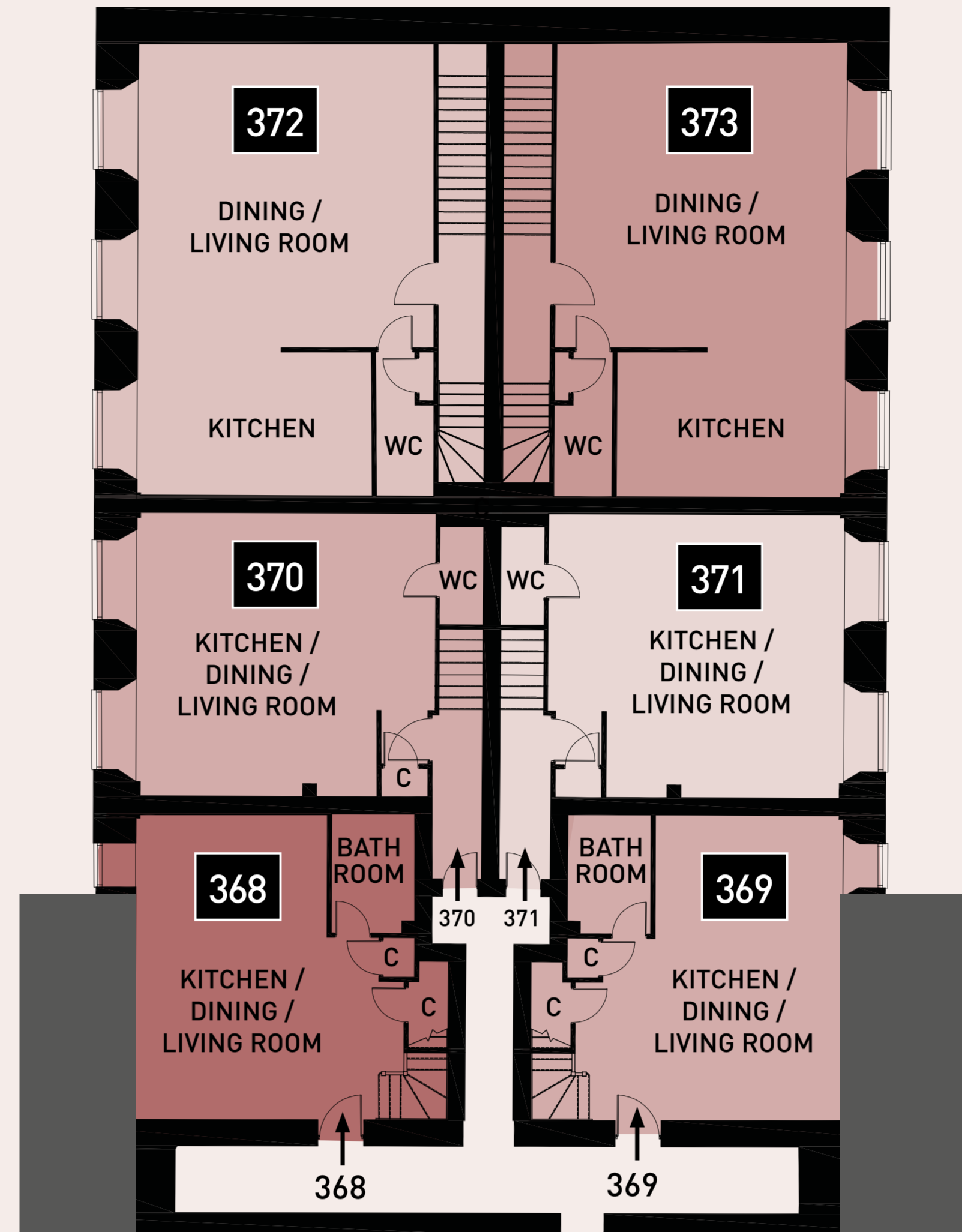


Ground floor

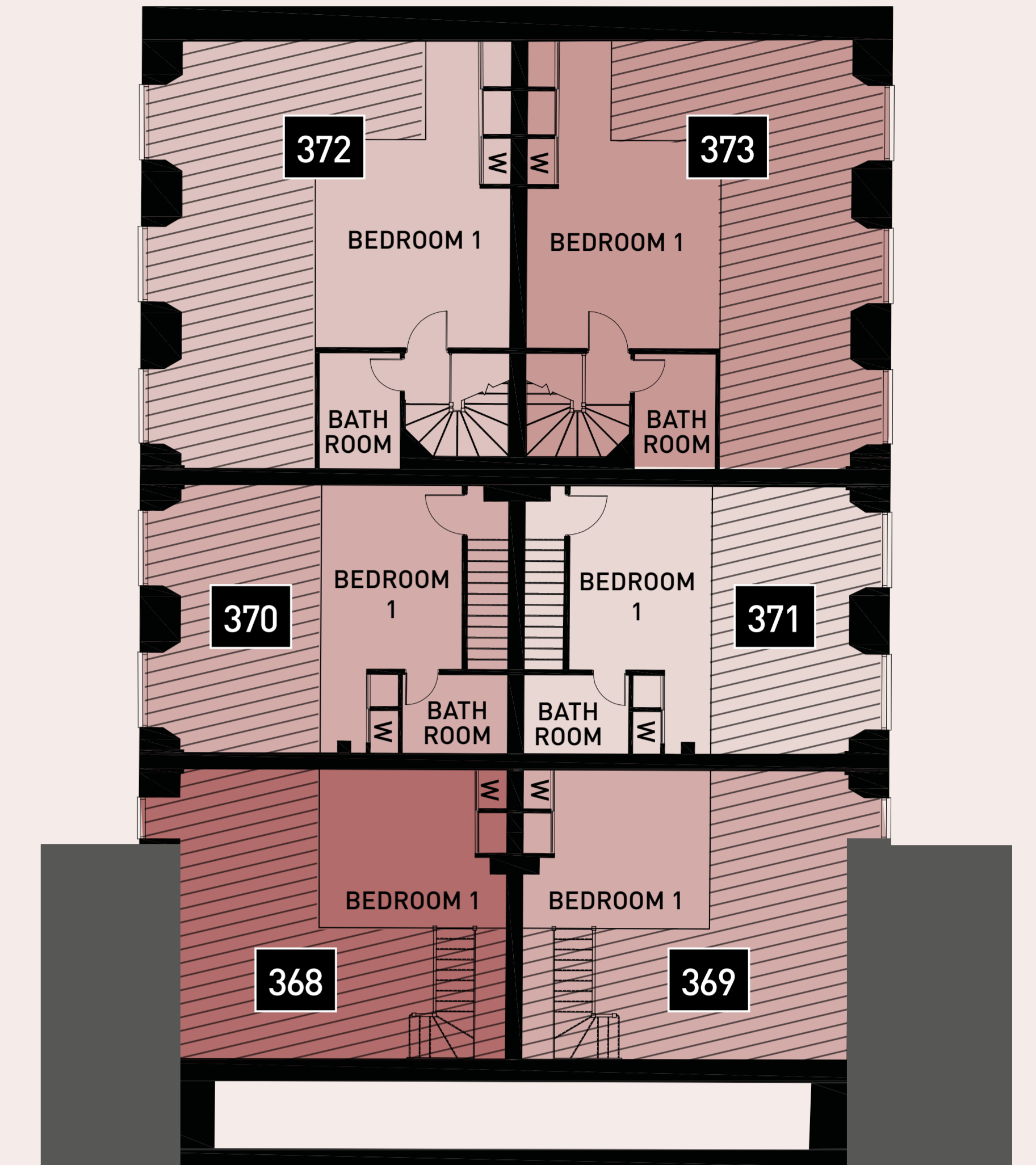
ENTRANCE TO 290, 291, 292, 293, 294, 295, 362, 363, 364, 365, 368, 369, 370 and 371

Mezzanine Duplex Apartments

A bespoke collection of stylish 'mezzanine' floor homes, designed with innovation and craftsmanship to create a double height ceiling with a glass balcony from the bedroom overlooking the kitchen/dining area. All including underfloor heating to the lower floor.

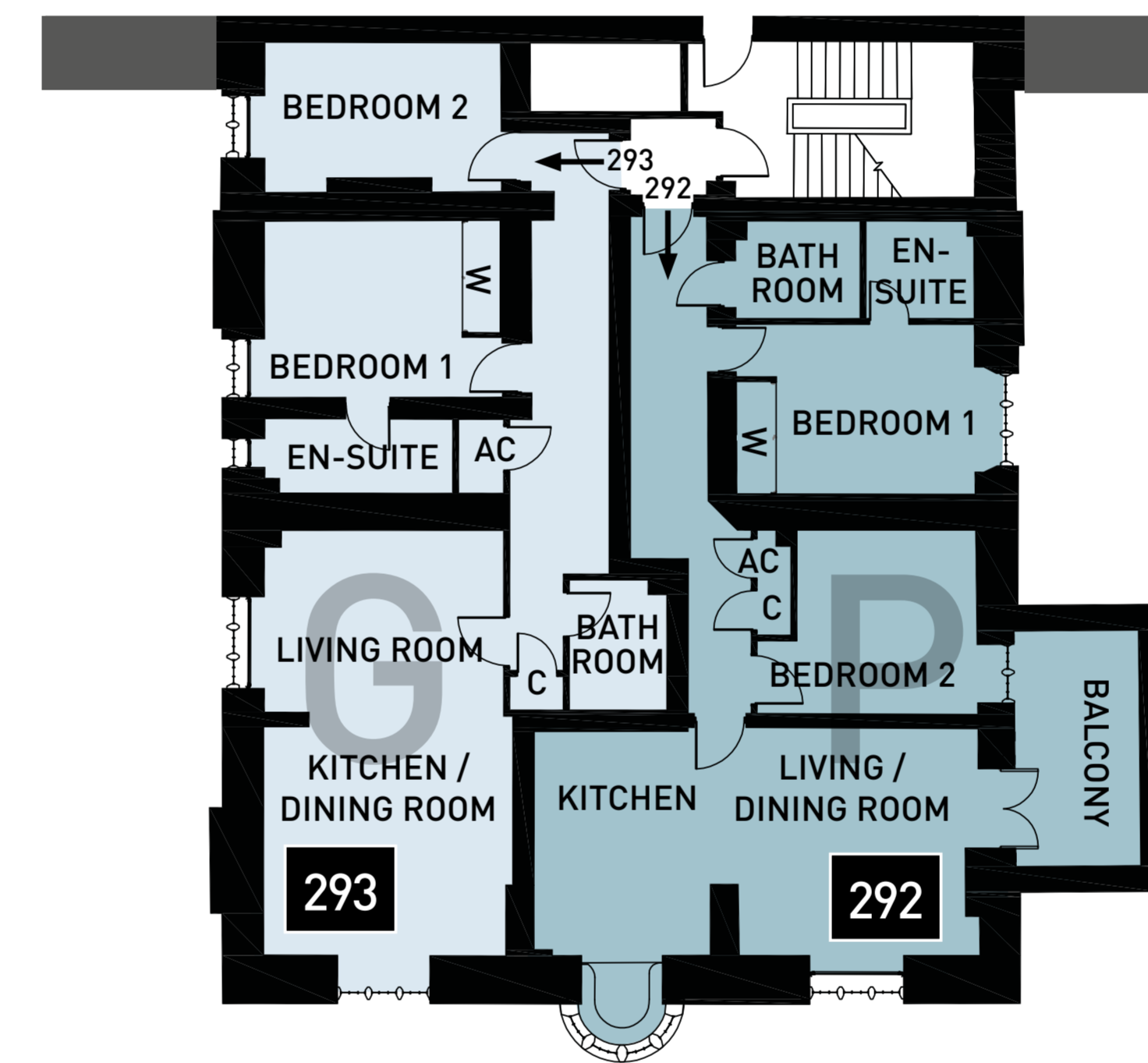


First floor

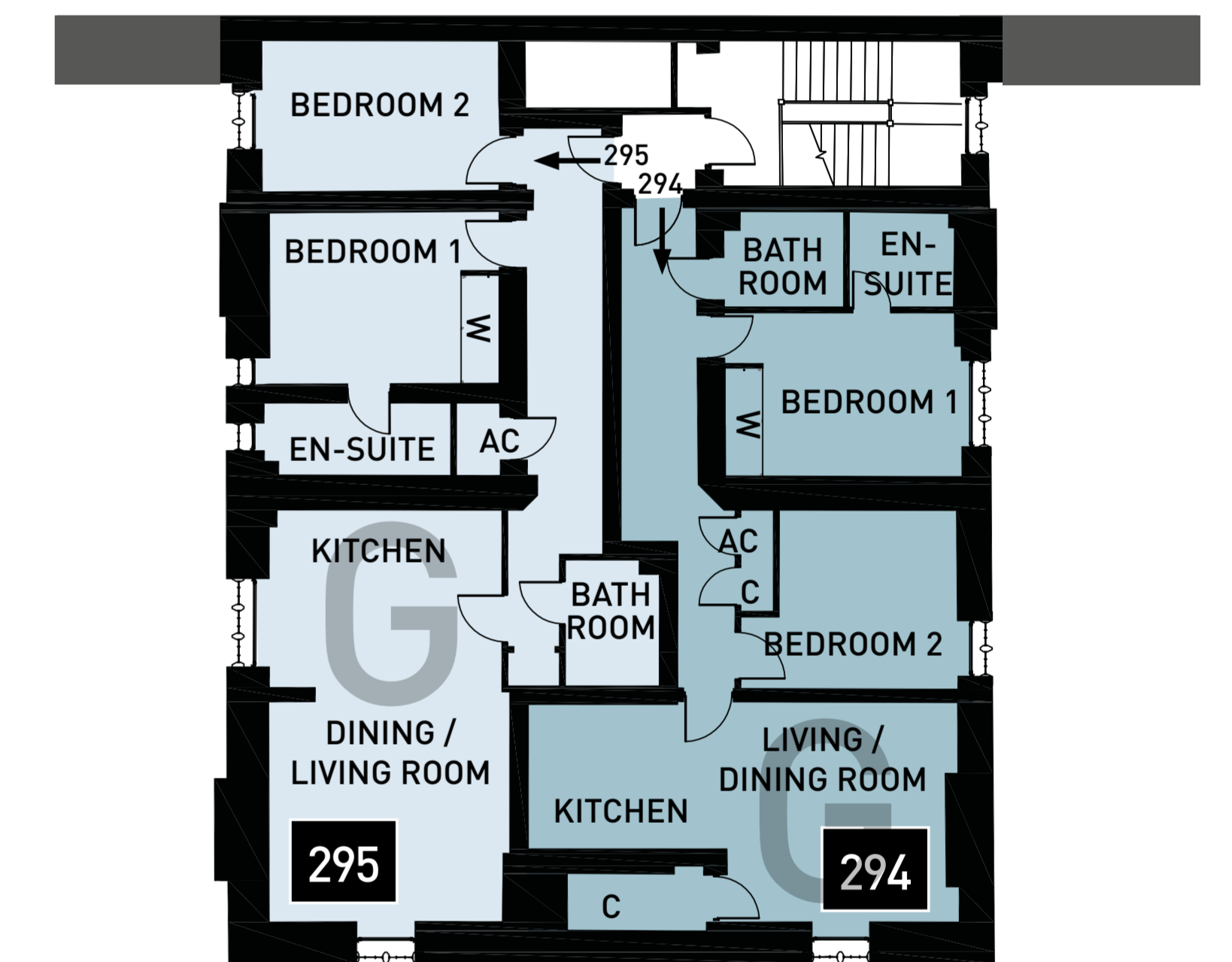


Second floor

Double Height



First floor



Second floor

Specification Level

S - Silver

G - Gold

P - Platinum

Ask our Sales Advisor for full details on specification.

Mezzanine Duplex Apartments

Apartments

Affordable

GROUND FLOOR APARTMENTS

PLOT 290	Living/Kitchen/Dining	6700 [22']	x	5535 [18'2"]
	Bedroom	4705 [15'5"]	x	4090 [13'5"]
PLOT 291	Kitchen/Dining	3840 [12'7"]	x	3055 [10'1"]
	Living Room	5060 [16'7"]	x	3305 [10'10"]
	Bedroom 1	3350 [11']	x	2645 [8'8"]
	Bedroom 2	3005 [9'10"]	x	2855 [9'4"]
PLOT 362	Living/Kitchen/Dining	5535 [18'2"]	x	3115 [10'3"]*
	Bedroom 1	3930 [12'11"]*	x	3110 [10'3"]
PLOT 363	Living/Kitchen/Dining	5435 [17'10"]	x	3125 [10'3"]*
	Bedroom 1	3600 [11'10"]*	x	3080 [10'1"]
PLOT 364	Living/Kitchen/Dining	6910 [22'8"]	x	2985 [9'10"]
	Bedroom 1	2835 [9'4"]	x	2700 [8'10"]
PLOT 365	Living/Kitchen/Dining	6815 [22'5"]	x	2985 [9'10"]
	Bedroom 1	2735 [9']	x	2700 [8'10"]

PLOT 366

Living/Kitchen/Dining	6920 [22'9"]	x	3515 [11'6"]
Bedroom 1	4330 [14'3"]	x	2885 [9'6"]
Bedroom 2	4315 [14'2"]	x	2425 [8']

PLOT 367

Living/Kitchen/Dining	6805 [22'4"]	x	3515 [11'6"]
Bedroom 1	4250 [13'11"]	x	2885 [9'6"]
Bedroom 2	4250 [13'11"]	x	2500 [8'3"]

FIRST FLOOR APARTMENTS

PLOT 292	Living/Dining/Kitchen	7600 [24'11"]	x	4000 [13'2"]
	Bedroom 1	3510 [11'6"]	x	2995 [9'10"]
	Bedroom 2	3250 [10'8"]	x	3155 [10'4"]
PLOT 293	Living/Dining/Kitchen	7485 [24'7"]	x	4220 [13'10"]
	Bedroom 1	3495 [11'6"]	x	3115 [10'3"]
	Bedroom 2	4160 [13'8"]	x	2655 [8'9"]

SECOND FLOOR APARTMENTS

PLOT 294	Living/Dining/Kitchen	7615 [25']	x	4015 [13'2"]
	Bedroom 1	3650 [12']	x	3000 [9'10"]
	Bedroom 2	3275 [10'9"]	x	3245 [10'8"]
PLOT 295	Living/Dining/Kitchen	7540 [24'9"]	x	4270 [14']
	Bedroom 1	3495 [11'6"]	x	3135 [10'4"]
	Bedroom 2	4330 [14'3"]	x	2770 [9'1"]

MEZZANINE DUPLEX APARTMENTS

PLOT 368	Living/Dining/Kitchen	6360 [20'11"]	x	6200 [20'4"]
	Bedroom 1 #	3405 [11'2"]	x	3350 [11']
PLOT 369	Living/Dining/Kitchen	6335 [20'10"]	x	6205 [20'4"]
	Bedroom 1 #	3405 [11'2"]	x	3355 [11']
PLOT 370	Living/Dining/Kitchen	6090 [20']	x	5765 [18'11"]
	Bedroom 1 #	3960 [13']	x	3030 [9'11"]

PLOT 371

Living/Dining/Kitchen	6020 [19'9"]	x	5765 [18'11"]
Bedroom 1 #	3960 [13']	x	3060 [10'1"]

PLOT 372

Living/Dining	6185 [20'4"]	x	6005 [19'9"]
Kitchen	4760 [15'8"]	x	2935 [9'8"]
Bedroom 1 #	4475 [14'8"]	x	4200 [13'9"]

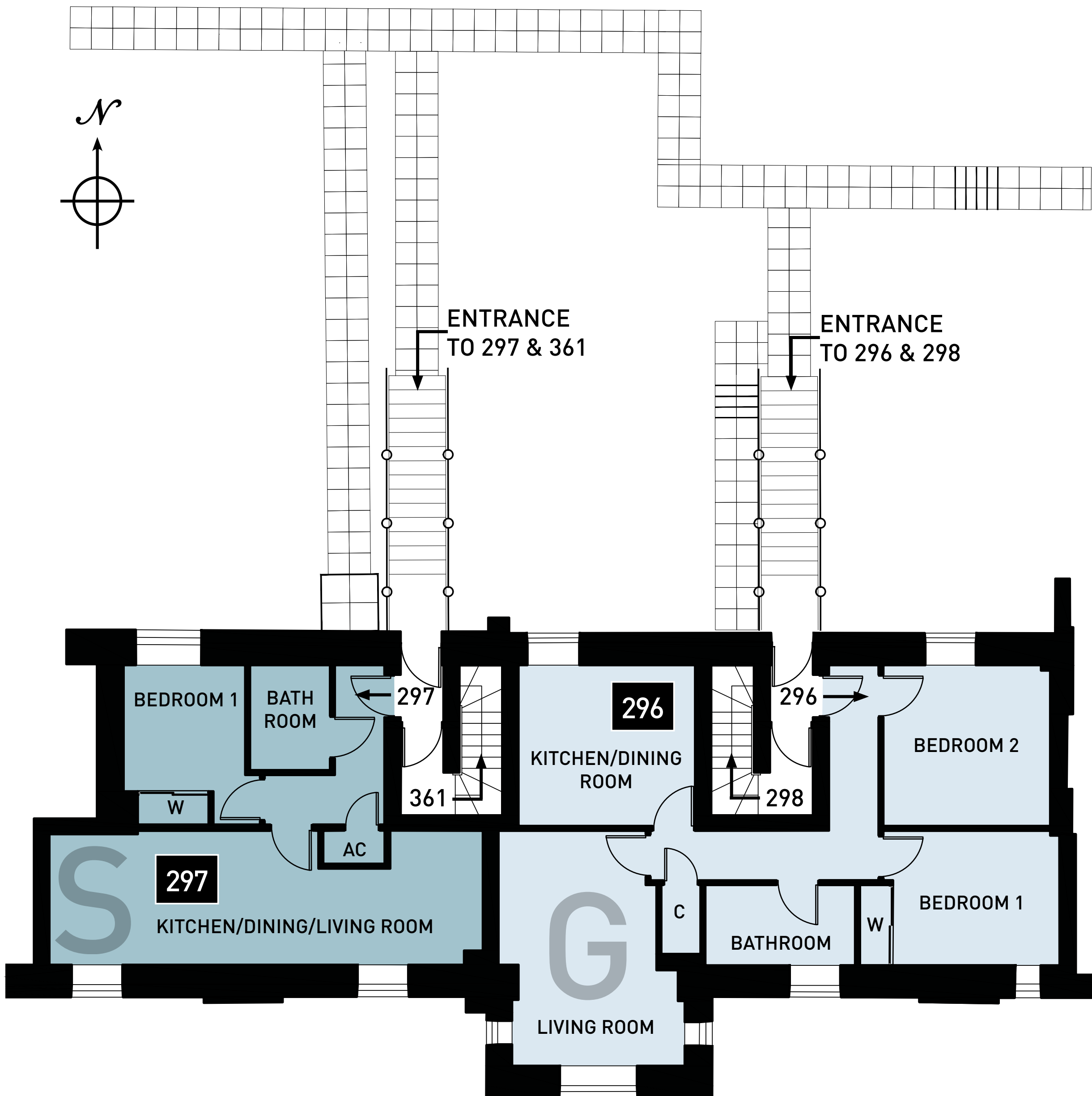
PLOT 373

Living/Dining	6185 [20'4"]	x	5915 [19'5"]
Kitchen	4650 [15'3"]	x	2950 [9'8"]
Bedroom 1 #	4475 [14'8"]	x	4170 [13'8"]

Dimensions given are approximate and usually maximum. Floor plans are not to scale - for guidance only.

* These rooms are not regular size. Dimensions are an approximate average.
Mezzanine

Central Hall - third release



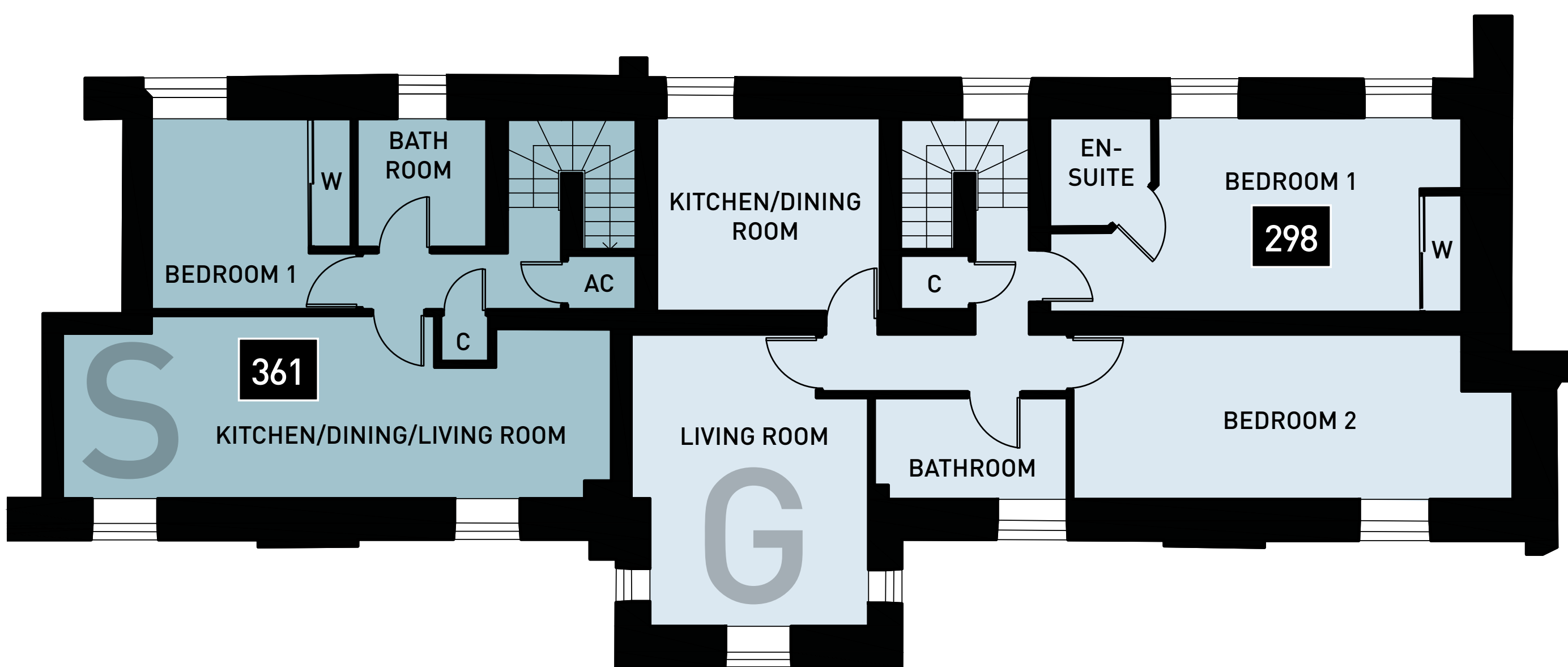
Ground floor

PLOT 296

Kitchen/Dining	3737 (12'3) x 3402 (11'2)
Living Room	4977 (16'4) x 3653 (12')
Bedroom 1	3522 (11'7) x 2852 (9'4)
Bedroom 2	3529 (11'7) x 3402 (11'2)

PLOT 297

Kitchen/Dining/Living	9171 (30'1) x 2761 (9'1)
Bedroom 1	2672 (8'9) x 2576 (8'5)



First floor

PLOT 298

Kitchen/Dining	3737 (12'3) x 3231 (10'7)
Living Room	4881 (16') x 3649 (12')
Bedroom 1	5082 (16'8) x 3246 (10'8)
Bedroom 2	7351 (24'2) x 2761 (9'1)

PLOT 361

Kitchen/Dining/Living	9171 (30'1) x 2756 (9'1)
Bedroom 1	3189 (10'6) x 2615 (8'7)

Dimensions given are approximate and usually maximum.
Floor plans are not to scale - for guidance only.

Specification Level

S - Silver

G - Gold